



Delta SNMP ShutdownAgent

ShutdownAgent Installation and Configuration Guide For VMware vSphere ESX 4.1 Server

1. Preparation

ESX 4.1 Server installed

Delta UPS with SNMP card

Download ShutdownAgent Linux version from <http://59.125.232.140> the file name is "snmp-sa-linux.tar"

2. Install ShutdownAgent in ESX server

2.1. Transmit the "snmp-sa-linux.tar" to the ESX server through SFTP by FileZilla FTP Client or other SFTP client.

2.2. Login to the ESX server by your favorite SSH client(Putty).

2.3. Change to root account.

su root

2.4. Copy the "snmp-sa-linux.tar" to /tmp.

cp snmp-sa-linux.tar /tmp

2.5. Goto the /tmp directory.

cd /tmp

2.6. Extract the snmp-sa-linux.tar file.

tar -xvf snmp-sa-linux.tar

2.7. Start to install ShutdownAgent.

./install

2.8. Follow the instruction to complete the installation.

2.9. After installation, the ShutdownAgent should install in the /usr/local/upsagent directory.

3. Configure the ESX server Firewall

3.1. Open the UDP 162 port for SNMP trap.

/usr/sbin/esxcfg-firewall -o 162,udp,in,"SNMP_TRAP"

4. Install VMware Tools for Guest OS

To shutdown the guest OS from ESX server, it's better for you to install the VMware tools for all of them so as to inform the guest OSes shutdown smoothly.

4.1. For Windows operating system.

Select the following menu Guest → Install/Upgrade VMware Tools

5. Configure ShutdownAgent for ESX

Because there is no graphical user interface for the ESX, the end customers have to edit the Agent.ini to configure the ShutdownAgent.

5.1. Goto the installed directory of ShutdownAgent.



Delta SNMP ShutdownAgent

ShutdownAgent Installation and Configuration Guide

For VMware vSphere ESX 4.1 Server

cd /usr/local/upsagent

5.2. Open and edit the Agent.ini.

vi Agent.ini

5.3. The file format is:

[Network]

Type=SNMP

IP Address=172.16.182.78

IP Address2=

SNMP Port=162

Port Number=3224

UPS ID=1

[Shutdown]

Enable Power Fail=Yes

Delay of Power Fail=300

Enable Battery Low=Yes

Delay of Battery Low=30

Auto Save=No

Command=Yes

Command Time=60

Command File=/usr/local/upsagent/Command.ESX

[Notification]

Enable=Yes

Period=60

The IP address of the SNMP card

Enable Power Fail Shutdown

OS Shutdown Delay in seconds

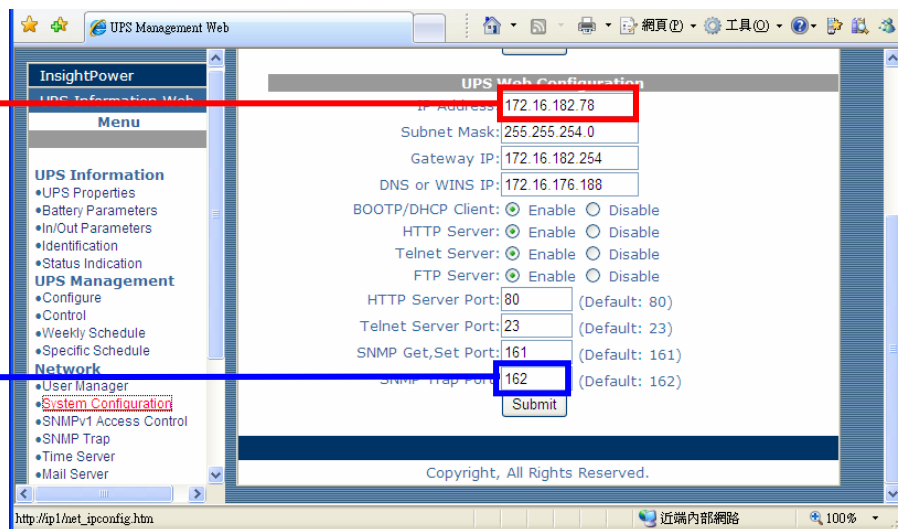
Enable Battery Low Shutdown

OS Shutdown Delay in seconds

Enable Run an External Script

Run the Script before Shutdown
in seconds

The Script File Name



(SNMP Card Web Page)

5.4. Please estimate the shutdown delay time for all of the guest OSes which run in the ESX server then fill in the **Command Time** field and set the **Command** field



Delta SNMP ShutdownAgent

ShutdownAgent Installation and Configuration Guide

For VMware vSphere ESX 4.1 Server

to Yes.

- 5.5. We have built the **Command.ESX** script file to shutdown the guest OSes which run in the ESX server. This script shutdown the running guest operating system sequentially. To shutdown the guest OSes, this file name must be fill in the **Command File** field.
- 5.6. After the Agent.ini has been edited, please save and quite the vi editor.
- 5.7. Now we have to restart the ShutdownAgent daemon to reload the Agent.ini configuration file. Firstly, we stop it.

./upsagentd stop

- 5.8. The start it again.

./upsagentd start

6. Configure ShutdownAgent and SNMP Card

- 6.1. On the SNMP device side. Users have to open the SNMP Trap web page, fill the “Target IP” address for ESX server and “Community” string. Select “Information” from the Event Level option and “DeltaV4” from Trap Type.

